

# Good News!

## Child allowance extended to the six grader of elementary school

In Japan, child allowance is available to families under a certain income level with children. Eligible children are now extended from third grade to sixth grade of elementary school to support families to grow up children in good health.



### ● Extension (expansion) of child allowance

Eligible children are extended from three graders (9 years old at the end of fiscal year) to six graders (12 years old at the end of fiscal year). Income level of eligible family is also raised.

### ● Newly eligible family who hasn't received child allowance is required an application for it

Those who apply for child allowance should complete the required procedures such as a certification claim, a certification claim for change of allowance and so on at city hall or town hall.

Those who have already received child allowance need not take any procedure.

### ● Those who were not eligible because of income level are advised to check new rule.

As income level for child allowance is raised in current revision, please check and ask for a certification claim if you are eligible.

### ● The following documents are required to a certification claim.

A copy of health insurance certificate

Income certificate (if your address was not in the city or town as of January 1<sup>st</sup> of the year)

More details, please inquire your city hall or town hall.

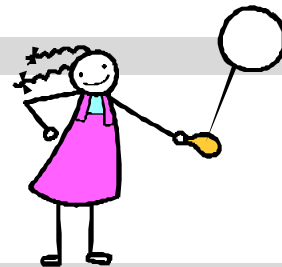
### ● Monthly allowance

Monthly allowance differs with number of children.

For first child . . . ¥5,000

For second child . . . ¥5,000

For third or more . . . . . ¥10,000



### ● As a rule, payment schedules are three times in a year.

Child allowance for four months is paid on February, June and October.

### ● Income level is raised in a big way.

The self-employed            less than M¥ 5,963 → less than M¥7,800

Business person            less than M¥7,800 → less than M¥8,600

# 512 cases Total cases of advice in 2005

Fujimino International Cultural Exchange Center has been running the foreign residents advisory center of Fujimi-shi, Fujimino-shi, Miyoshi-machi and nearby city since 2001. Counseling or consultation cases have been increased year after year and the details have also changed with times. Total cases were 512, nearly 2 cases in a day. We are always to be reliable neighbors to everyone who has a problem and do our best to solve his/her problem such as everyday life-related and legal issues in good faith

Three major items are the followings:

The first place: Educational support such as writing a document for guardians of foreign nationals to school, linguistic assistance for children of foreign nationals at school, assistance on entering day nursery, kindergarten, or school, and so on.

The second place: Linguistic support such as teaching Japanese, translation, interpretation, and so on

The third place: Medical support such as accompanying foreign nationals to the hospital, attending them for hospitalizing, consultation on financing birth expense, and so on.

Free, confidential and warm consultations are available here in the center. Foreign visitors who have all sorts of problems are increasing. You are always welcome and we hope everyone will be able to solve or ease his/her worries of life and live comfortable in Japan.

## Introducing your country • • Foreign volunteers are invited

Saitama International Association is inviting foreign citizens to register as volunteer staffs who are requested to play roles such as the followings at school or public hall.

Introducing your country 's culture  
Hands-on learning (playing, folk dancing, native dress, etc)      Specified theme

You are accompanied Japanese volunteer staff and work with her.

Speak in Japanese

School visit with Japanese staff

Japanese staff informs what to do in advance.

Gratitude for one lesson is ¥6,000 (incl. carfare)

Inquiry: Saitama International Association

Tel 048-833-2992

E mail: sia@sia1.jp

## Vicious side job practice is spreading. Warn to foreign residents, too

There are a lot of stories of counseling on side job in Fujimi-shi. Many house-wives in twenties to forties are working as side jobs to help out with the family budget and some of them fall victims to frauds as follows.

Advertised large income with pc side job and bought an expensive pc but no work.

High assistance fee on side job, but low cost or no payment

Advertised large income for distribution of fliers, but no payment

Vicious side job assistance is now spreading. Be careful and advised to consult with reliable Japanese.

Apology and Correction National Act appeared in May issue of Information Fujimino. Eight line, 1 'Child whose mother had Japanese national' should be corrected 'Child whose **father or** mother had Japanese national'