

Where should we head for?

With a lot of concerns about the falling birthrate and the aging population, we wonder that Japan takes enough care of children. Do they listen to their bitter voice? Let's deliver the voice of foreign residents.

Don't you listen to the voice of "SOS" uttered by the children who can't study from 15 to 18 years old?

Please make an opportunity for their education. Please find out the place in which they live without any fear.

With more and more international marriages, there have been increased children invited from mother countries to Japan. In case that a foreign resident parent has residence status such as Japanese spouse, a residential visa will be given to the unmarried infant. Under these circumstances, more than 800,000 school-age children from 5 to 18 years old enter Japan every year. Japan is one of the world fastest aging societies. It is very important for us to absorb foreign children and raise them to youths to become the leaders of social securities in the future.

① In case of Public elementary school, Junior high school and Senior high school

It is said that the number of foreign resident children who are in need of education for Japanese language is 28,500 all over Japan. Japanese language education has been done to 80% of them in the elementary, junior high, senior high in total 6,423 schools.

Besides foreign resident children, 5,496 children having Japanese citizenship are in need of Japanese language education.

② Night Junior high school

There are currently 34 night junior high schools in Japan and the children go to study basic Japanese language. It is said that more than 70% of the children in these schools are foreigners. In Saitama Prefecture the children who are less than 15 years old and non-graduated junior high school in mother countries enable to enter into the schools.

Night junior high schools in Tokyo	Address	Near station
Adachi ward Daiyon junior high school	Umejima Adachi-Ku	Umejima, Tobu-Isezaki line
Hachioji city Daigo junior high school	Myoushincho Hachioji city	Hachioji, JR or Keio line
Katsushika ward Futaba junior high school	Ohanajaya Katsushika-Ku	Ohanajaya
Sumida ward Bunka junior high school	Bunka Sumida-Ku	Komurai, Tobu line
Oota ward Koojiya junior high school	Koojiya Oota-Ku	Ootorii, Keikyu Kuukou line
Setagaya ward Mishuku junior high school	Taishido Setagaya-Ku	Sangenjaya, Tokyu Den'entoshi line
Arakawa ward Daikyu junior high school	Higashi Ogu Arakawa-Ku	Machiya, Tokyo Metro Chiyoda line
Edogawa ward Komatsugawa Daini junior high school	Hirai Edogawa-Ku	Hirai, Soubu line

③ Japanese language classes

There are too many problems when considering the children who are less than 15 years old and enter into neither public schools nor night junior high schools. Most of them have too poor Japanese language ability and there is not publicly provided program for Japanese language education to foreigners. In Japan, it is very difficult to get jobs without a high school diploma. Even when the children try to get jobs by asking the father in law, the eligibility for entrance becomes an obstacle, high-school-educated at least diploma at least.

Nearby schools	Near station	School fees	eligibility for entrance
S Japanese language school	Oomiya	690,000 yen /year	High school graduated or more and within 3 years after the graduation
M Japanese language school	Musashiuraw	1,480,000 yen/2 years	High school graduated or more
M Japanese language Academy	Ikebukuro	1,060,000 yen/ 18 months	High school graduated or more
T Information Special school	Shiki	634,000 yen for the first fiscal year	High school graduated or more

④Mental anguish

There is existing anguish for the foreign children who were educated at junior high school in mother countries and it is an anxiety about their own position in Japan. When their mother divorces or old father in law dies, their residence status will be invalid. They are always wondering whether they should stay in Japan or return back to their mother countries. And even if they return back to the countries, they have no relatives in local.

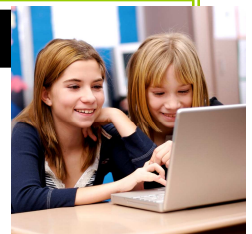
⑤For youths under 15 years old having residential visa in the future

Although there are visa-qualified youths but some of them can neither go to school nor get the jobs in Japan. Now it's time for all of us to take our actions to help them support the future in Japan after grow-up persons. Find and establish training places to and fro for them to study basic Japanese language and prepare for high school admission.

It enables them to study 3-4 lessons from 10:00-15:00 every weekday with low schooling fee and government or private subsidies would be preferable. If we could get cooperation from foreign residents, foreign students, Japanese students and specialists as the teachers, it couldn't be better. We would appreciate it very much if we could get the place to study, financing help, study support to the children and useful information.

Personal computer class will start at FICEC from April 1. Why not join this class?

This class is open for the purpose of self-reliance of foreign residents and we are arranging student recruitment at free of charge. The instructor is Ms. Satomi Kaji who is good at giving easy and kind explanation on computer lesson. Application: FICEC TEL 049-269-6450



Free individual dosimeter rental in Fujimi City

As informed in February issue, free dosimeter is available. The contamination level in Fujimino city is currently below national standard. If you are still nervous about contamination, please use this dosimeter by yourself.

●Application: Kankyō-ka TEL 049-251-2711 Ext.299



(株)堀場製作所製 環境放射線モニタ PA-1000 Radi

Did you finish an application for child allowance?

February is one of payment months for child allowance but the system of child allowance was revised on October 2011. This revision requested even the persons who have been receiving child allowance to submit Child Allowance Authorization Application Form again. Without the submission of this application form by March 31, it is not possible to get the child allowance, retroactive to October 2011. The persons who have changes such as childbirth or moving-in are able to get the child allowance from the next month if the procedure is taken within 15 days after the changes.