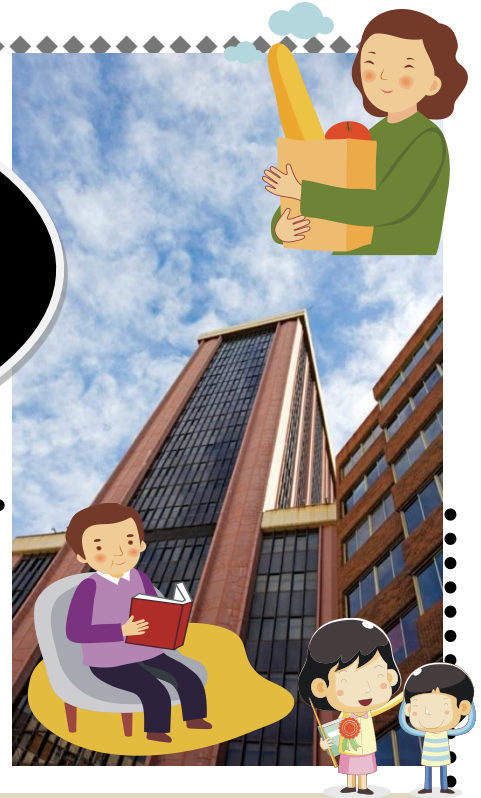


Worth challenging! Let's enjoy comfortable lifestyle with an application for prefectural housing.



The facilities managed by public sector agency are made available at low cost and comfortably. An apartment of Saitama prefectural housing is no exception. It is difficult to get selection due to high winning rate but it is worth challenging. Go and try with enthusiasm.

You may be able to enjoy the comfortable lifestyle in Saitama prefectural housing if selected.

We have been often asked how to apply for an apartment in Saitama prefectural housing by foreigners. It results mainly from low rental rate compared to one of private sector housing to foreigners. There are not many prefectural apartments in Saitama but they are provided in various places. A lot of prefectural apartments have been provided at low rental rate. It is possible for foreigners with residence status to apply for the prefectural apartments. However, it is necessary for the final tenants to meet some requirement in order to make an application. For instance, they shall have own address or place of work within Saitama prefecture. The total income amount shall be below the required standard. New tenants are determined by lots after submitting necessary documents 4 times per year, January, April, July and October. Application form (Free of charge) is available at city, town office and Saitama Housing Supply Corporation head or branch offices.

Application: 4 times per year. Pay attention to housing information on your local favorite area.

- A. Select your favorite apartments.
- B. Check whether the application is possible or not. It is impossible for those who have more than three persons in family to apply for apartment for two persons.
- C. Fill in all necessary items on the application form after checking.
- D. Send the application form (One application/household) per post mail by appointed time. It will be disqualified when double-applications are found.
- E. The lottery number will be sent back to the applicants. The winners are selected by a lucky draw and begin the procedure for move-in when selected. A winning rate is sometimes high. Please note that no application leads any result. It may take some time to make an application but how about trying to apply for it.



Booklet in preparation for big earthquakes is available. Guidebook and Emergency Card.

From experience with the Great East Japan Earthquake, a lot of lecture/study meetings are being frequently held. FICEC also published “Guidebook & Emergency card against disasters in 7 languages”. Guidebook helps foreigners to learn how to act in case of unexpected disasters. The contents show evacuation area, safety/well-being of his/her family and topics which is not discussed often in the family. Languages: English, Chinese, Korean, Spanish, Portuguese, Philippines and Japanese. Emergency card is attached to the Guidebook. Some assistances/supports will be received from the Japanese who can't understand foreign language by showing this card. Free of charge. Contact FICEC if you are interested.

☎ 049-256-4290 FAX 049-256-4291

Wanted! Volunteered interpreters & translators.

Do you know persons who are fluent in Japanese? We want to ask the persons for the translation of public documents or booklets in relation with FICEC. However, please note there will not be always jobs/works. FICEC will inform you when necessary. Languages: English, Philippines, Spanish, Portuguese, Chinese and Korean. Requirements: Address doesn't matter. The first meeting is held in FICEC and subsequent communication will be done through E-mail. More than one year experience would be preferable. Remuneration: Based on FICEC standard. It depends on translation fields and volumes etc. Application: Visit FICEC after making a reservation by phone. Contact: Fujimino International Cultural Exchange Center (FICEC)

☎ 049-256-4290

Do you know minimum wage in Saitama Prefecture in Fiscal year 2012?

Have you ever heard “Minimum wage in Saitama” applied for those who are doing business or working in the company and “Minimum wage by industry groups” for specified industries listed below? You take it as a suggestion.

Minimum wage in Saitama: 771 yen/hour. As of Oct 1, '12	
Minimum wage by industry groups	Yen/hour
Non-ferrous metal manufacturers	832
Electronic components, devices, circuits, equipments, information-communication equipments	836
Transportation equipments	847
Optical device, lenses, watch and parts	845
Retailers	802
Automobile retailers	847
Please note that the minimum wage by industry groups has priority over the minimum wage in Saitama. (Issue date: Dec.1, '12)	

www.ficec.jp/living/

•For further enquiry, contact Fujimino International Exchange Center, 049-256-4290.