



# For Foreigners Working in Companies

Even when the new coronavirus (COVID-19) has caused a decrease in business for the company, foreign workers are not allowed to be treated less favorably than Japanese workers just because they are foreigners.

1. Company must pay a **leave allowance** to Japanese as well as foreign workers when they are forced to take days off from work by the company.
2. The **subsidy** the national government pays companies to protect worker employment can be used for Japanese as well as foreign workers.
3. When you take days off from work because your children's schools are closed, you can use **paid vacation days** just like Japanese workers.
4. Companies cannot freely fire you at will. When a company wants to fire a foreign worker, **the same rules as Japanese workers must be followed.**

If you need help, please consult your local labour bureau, labour standards supervision office or public employment security office (Hello Work).

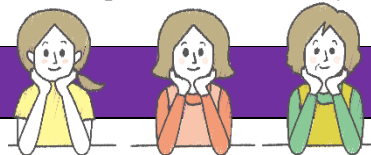
## To foreign students graduating from Japanese schools in March

**Were you promised a job at a Japanese company starting in April, but then the company said that you could not work from April?**

Please consult the Public Employment Security Office in such an event. Public Employment Security Offices have been telling companies that they "should make it possible for employees to work from April" and helping everyone find a job. If you are uncertain about your status of residence from April, please consult your local Immigration Bureau.

Life consultation

FICEC offers daily consultation from 10 a.m. to 4 p.m. from Monday to Friday. Here are some examples.



Ms. A: I visited City Hall to find a house in City F but did not approve my moving in.

When moving

- (1) First, find a new home, then go to the city hall where you live and submit a transfer notice to get a transference certificate. **(within 14 days before and after moving)**
- (2) Next, give the move-in notification and move-out certificate to the new city hall. **(within 14 days after moving)**

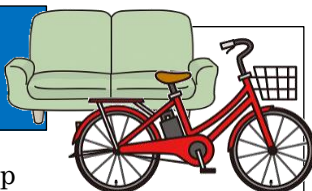
In case of Ms. A, she was refused to move because she did not decide where to move in. Remember to perform application of move in and out in 14 days before and after moving. When you move into the same city, you only need to report the relocation.

Ms. B: Temporary released. I went to the City Hall to apply for a welfare program because I was in trouble with my money but was refused.

Only permanent residents, spouses of permanent residents, spouses of Japanese, special permanent residents and certified refugees are eligible for welfare.

\*Temporary release: A person who has been detained at an immigration bureau due to an illegal stay etc., and has been temporarily removed from consideration due to poor physical condition or family circumstances.

Disposal of oversized garbage became partly charged in Fujimino-shi and Miyoshi-machi



■ When sending to the usual dump

- (1) Call City Environment Division 049-257-8612, tell what, when and how many dumps you are going to send, and get a reception number.
- (2) Purchase “oversized garbage processing fee payment ticket (sticker ticket)” in city public facilities or convenience store (plan).  
Example: folding bed 1000-yen, bicycle 500-yen
- (3) Paste the sticker on the oversized garbage and put it out on a certain date.

■ If you bring yourself in the environmental center, stick a sticker on the oversized garbage and bring in. (No application required)

If you bring it in, the fee will be halved.

■ Please note that if you put out the same as regular garbage without stickers, it will be a trouble.

Don't forget your child's vaccination!

The baby inherits immunity from the mother when she is in her mother's tummy. However, this immunity is gradually lost. Vaccination is necessary about 2 months after birth.

There is a suitable time for each type of vaccination and the target age and vaccination interval that can be received free of charge are determined.

Bring your mother and child handbook to the hospital and have a regular checkup.

If you do not have a mother and child handbook, consult a local health center.



Looking for interpreters and translators

English, Chinese, Tagalog, French and Nepali

Check every day!

NEWS WEB EASY

News written in easy Japanese



NHK WORLD-JAPAN

News written in multiple language



Translation work

◆ FICEC accept translations such as singleness certificates and birth certificates into Japanese 2000 yen per translation fee

- ◆ Translation of other documents 3000 yen per one A4 size paper
- ◆ It takes one week to translate