

September 1st is Disaster Prevention Day

On September 1, 99 years ago, a major earthquake struck the Kanto region, leaving 105,000 people dead or missing, mainly in Tokyo and Kanagawa. To remember the disasters caused by the earthquake, September 1 has been designated as "Disaster Prevention Day," a day to prepare for natural disasters.

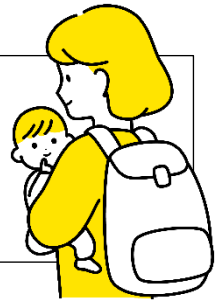
It is not surprising that a major earthquake could occur anywhere and at any time in Japan. In addition to earthquakes, there are typhoons, heavy rain, heavy snow, tornadoes, and volcanic eruptions. If Mt. Fuji or Mt. Asama erupt, Saitama Prefecture will also be affected.

Let's think about protecting ourselves from disasters on the occasion of Disaster Prevention Day.

◆ Check the hazard map for the area where you live

Do you know ...

1. where the local shelter is located? 《Yes · No》
2. how much food and water you need to store? 《Yes · No》
3. what number to call in case of fire? 《Yes · No》
4. how to use a fire extinguisher? 《Yes · No》



A hazard map is a map showing areas where disaster damage is likely to occur.

This map can be used to predict the disaster damage in your area.

If you see a hazard map, check the "location of evacuation centers" and the "route to evacuation centers".

Q. Where can I get a hazard map?

A. You can get it from the municipality in which you currently reside.

◆ Simulate actions to protect yourself

When an earthquake or natural disaster strikes, the first thing to do is to evacuate yourself to a safe place and prepare for aftershocks and fires.

Fujimino-shi
Hazard map



◆ Take steps to prepare for disasters

- (1) Discuss and decide where to evacuate to in the event of a disaster.

⇒ Evacuation centers are defined for each region.

(Community centers, schools, public facilities, etc.)

- (2) Consult with family members, acquaintances, and friends on how to contact them even when cell phones are not available.

Fujimi-shi
Disaster
prevention guide



⇒ The Disaster Message Dial (171) is a service that allows users to register and confirm safety and other information by voice using the telephone number of a person in the disaster area as a key.

※ Available from NTT East/NTT West subscriber phones and NTT DoCoMo cell phones.

- (3) Prepare "food for 3 days x number of people" in case of disaster.

⇒ Foods that can be stored for a long time (5 years) are available. You can buy more rice, canned foods, and retort foods and store them for 3 days.



**FICEC
Life Consultation**

**FICEC also accepts daily consultations
on Saturdays and Sundays**
Monday to Saturday 10:00 to 16:00
Sunday 13:00 to 16:00



I am a Filipino with a permanent resident visa. If I divorced my husband, would I need to notify the Immigration Office?

You would not need to do anything in this case. However, those who are staying in Japan on a Dependent Visa, Spouse or Child of Japanese National Visa, or a Spouse or Child of Permanent Resident Visa, and whose status as a spouse is based on their visa status, are required to notify the Immigration Office within 14 days of separation from or death of their spouse. Failure to do so may result in a fine of up to 200,000 yen and may impact your next visa application.

My 18-year-old son living in China will arrive in Japan after graduating from high school. He has been accepted at a Japanese language school. Do you know of any free courses for learning basic Japanese before starting school?

There are a number of free Japanese classes provided by Japanese volunteers and non-profit organizations in Saitama Prefecture. You can ask for more information on local classes at your city or ward office. You can also search the internet for “Saitama International Association (<https://sial.jp/en/foreign/japanese/>)”. After finding a class that matches your location, date, and time, just show up to the class; you don't need to book. Good luck!

**Fujimino City
Living Guide**

It contains important information such as moving-in registration, marriage, childbirth, taxes, garbage disposal, health insurance, welfare and medical care, children's welfare, schools, etc.

It is available at the Shimin-ka (Citizens Division) of City Hall, community centers, Fujimino International Cultural Exchange Center, etc.



- Free of charge.
- English
 - Easy Japanese
 - Chinese
 - Filipino
 - Portuguese.
 - Korean
 - Vietnamese
 - Nepali

Café FICEC
Only English café



Cafe FICEC will be held on the first Sunday of every month at 2:00 p.m. starting in September. This is a gathering to enjoy conversation in English only for 90 minutes. Would you like to make friends over tea?

- Date/Time: October 2 (Sun.) 14:00-15:30
- Place: FICEC
- Participation fee: 500 yen (for tea)
- Participation: 12 people
- Application: 049-256-4290



公益財団法人
つなぐいのち基金

**“Drawing Contest” for
Children with Foreign Roots**

An exhibition held at a nearby facility ended in August and will be on display at FICEC in September. Come and see 44 paintings by 33 children from 9 countries. Please see the FICEC website for dates and other information.

